

Installation of the pCon.basket license

Product type: pCon.basket

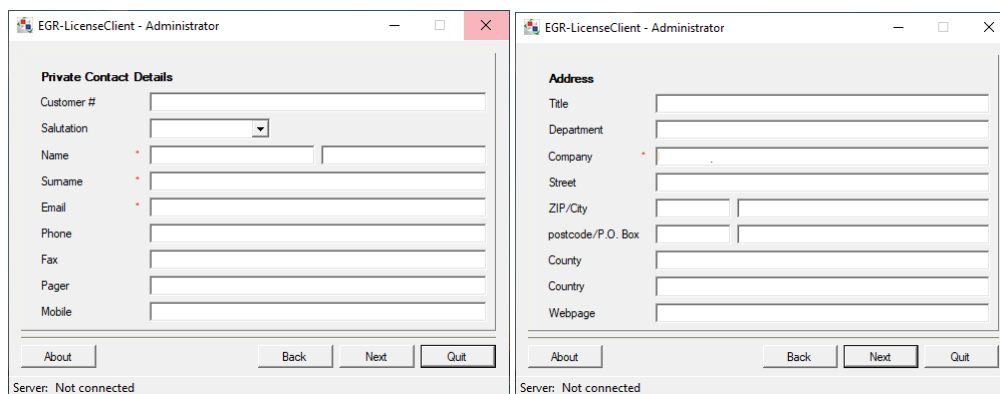
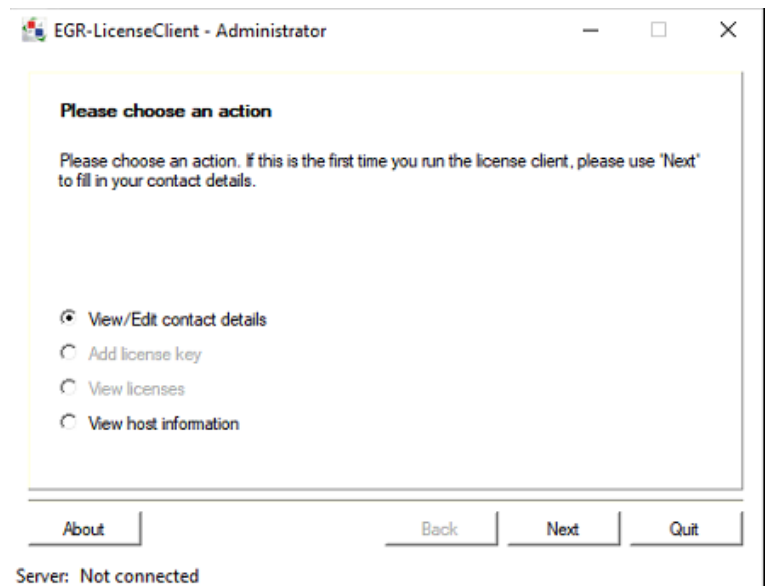
Content

1	Entering the contact information.....	1
2	Entering the licensekey	2

1 Entering the contact information.

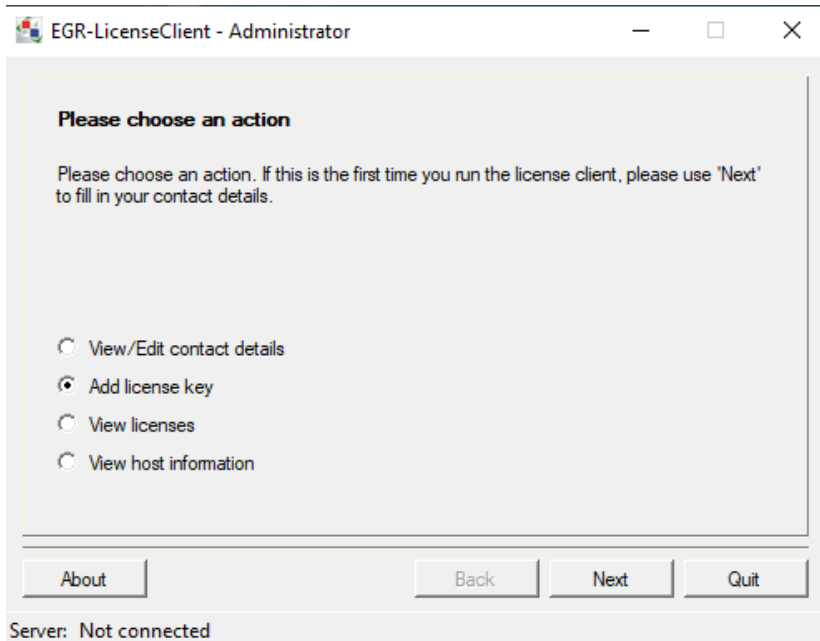
After installing the pCon.basket and the EGR-LicenseClient, you can start installing the license of pCon.basket.

Open the EGR-LicenseClient. The following menu is now displayed. *Add license key* and *View licenses* are gray and cannot be selected yet. You must first enter your contact details in *View/Edit contact details*. Select *View/Edit contact details* and click *Next*

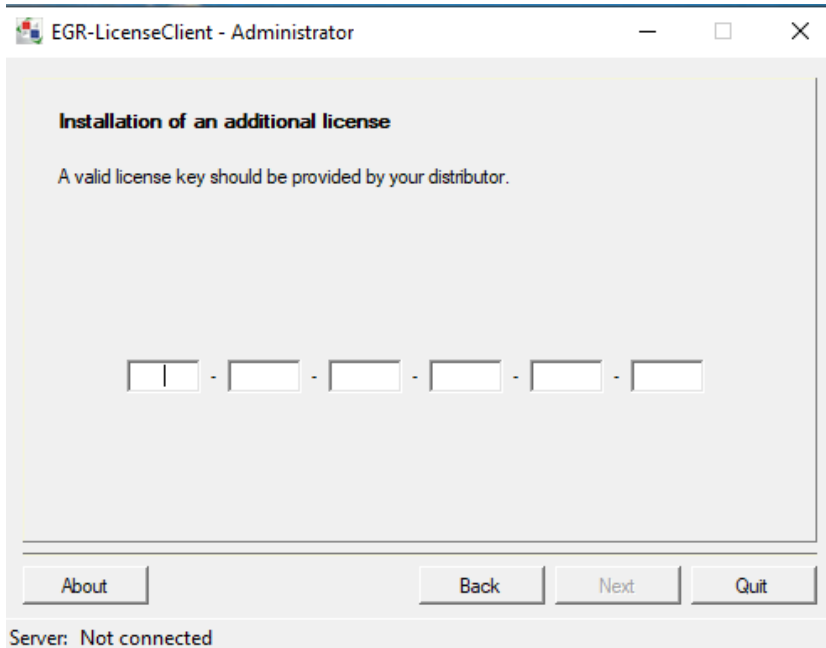


You only have to fill in the fields at the red dots. After filling in the information, click on *Next* and you have to fill in a second field. Then click on *Next* again, and you will return to the main menu.

2 Entering the licensekey



You can now select *Add license key* and click *Next*.



In the next field you can enter the license key. Then click *Next* again. The license of the pCon.basket is now installed.

Legal remarks

©EasternGraphics GmbH | Albert-Einstein-Straße 1 | 98693 Ilmenau | GERMANY

This work (whether as text, file, book or in other form) is copyright. All rights are reserved by EasternGraphics GmbH. Translation, reproduction or distribution of the whole or parts thereof is permitted only with the prior agreement in writing of EasternGraphics GmbH.

EasternGraphics GmbH accepts no liability for the completeness, freedom from errors, topicality or continuity of this work or for its suitability to the intended purposes of the user. All liability except in the case of malicious intent, gross negligence or harm to life and limb is excluded.

All names or descriptions contained in this work may be the trademarks of the relevant copyright owner and as such legally protected. The fact that such trademarks appear in this work entitles no-one to assume that they are for the free use of all and sundry.